

TES 99
Tissue
Embedding System



TES 99

Tissue Embedding System

The new designed flexible working place **TES 99** allows a comfortable, rapid and accurate embedding of tissue specimens in paraffin. With its great variety of units (please refer to the details on the next pages) it finds its place in every laboratory.

Due to its modular design, the separate units can be combined according to your needs and meet the individual technical and personal requirements of any laboratory.

The identical heights of the working surfaces and the ergonomic design of the heat protective hand rest on the dispenser unit avoid operator fatigue. The cold light lamp assures an optimum illumination of the work area and the optional magnifying lens is simply clicked onto it. The paraffin flow is infinitely adjustable and operated by hand or foot switch. The large space below the dispenser nozzle allows the embedding of specimens of any size – not only cassettes. The cold spot integrated in the dispenser working plate enables a comfortable, easy orientation of the tissue sample.

In addition to the high capacity of the modules, increased efficiency is reached by the fact that the cooling and thermal elements can be switched on or off separately. The different temperatures are independently adjustable and supervisable by digital control. The dispenser unit is equipped with a programmable timer where the individual start up and end times for the heating of the paraffin tank and the working plate can be set separately for every week day. All electronic controls are simply operated by finger touch.

The units are made of selected, high quality material and components, guaranteeing a long life, easy maintenance and serviceability. As our contribution to environment protection the cooling modules are operated with R 134 A free of fluorocarbon and chlorinated hydrocarbon.

Cold light lamp

optional extra:
magnifier, 4 diopters

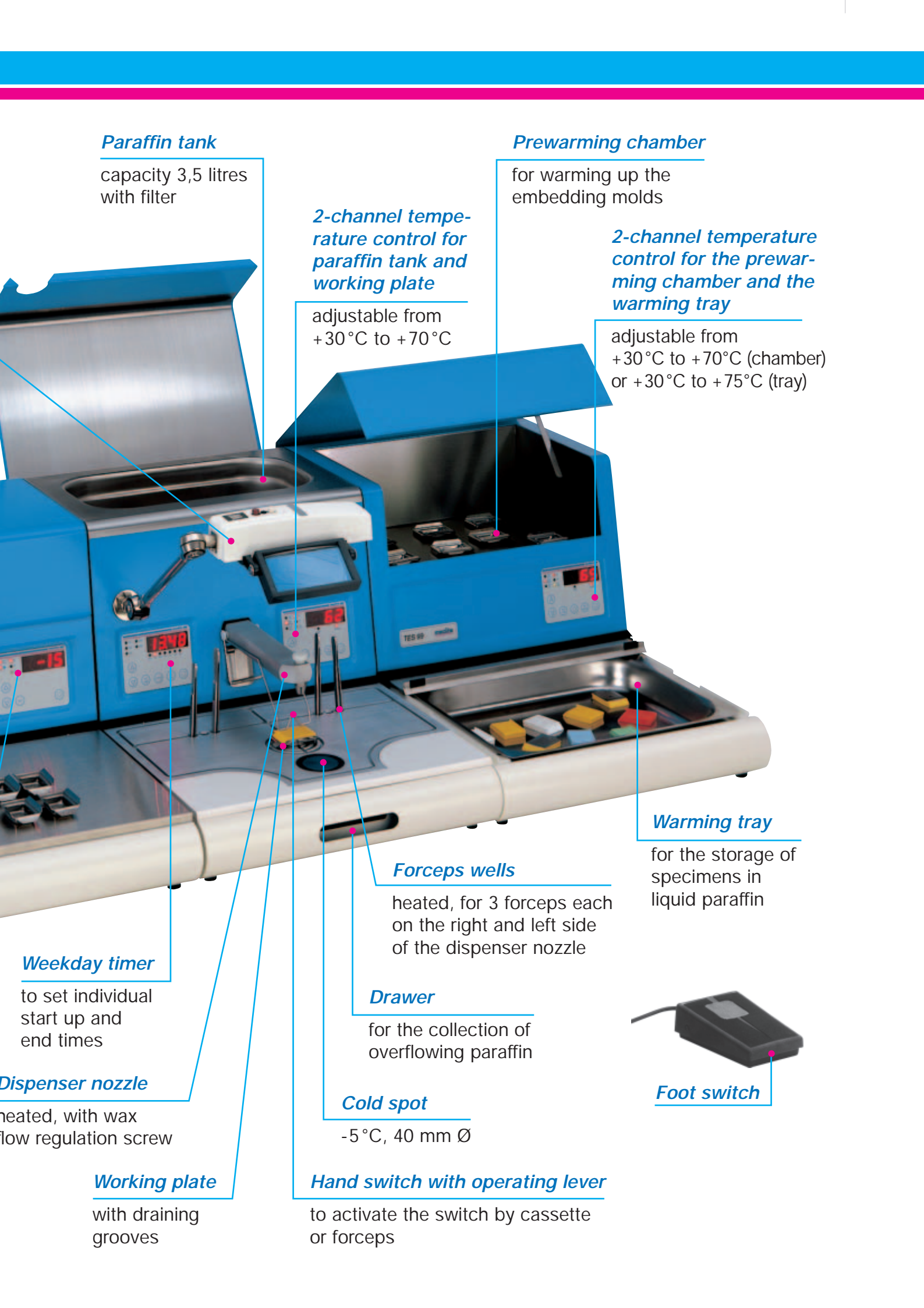


Temperature control

adjustable down
to -15 °C

Cold plate

stainless steel
500 x 260 mm
for approx. 110 blocks
CFC-free



Paraffin tank

capacity 3,5 litres
with filter

Prewarming chamber

for warming up the
embedding molds

2-channel temperature control for paraffin tank and working plate

adjustable from
+30°C to +70°C

2-channel temperature control for the prewarming chamber and the warming tray

adjustable from
+30°C to +70°C (chamber)
or +30°C to +75°C (tray)

Warming tray

for the storage of
specimens in
liquid paraffin

Forceps wells

heated, for 3 forceps each
on the right and left side
of the dispenser nozzle

Drawer

for the collection of
overflowing paraffin

Cold spot

-5°C, 40 mm Ø

Foot switch

Weekday timer

to set individual
start up and
end times

Dispenser nozzle

heated, with wax
flow regulation screw

Working plate

with draining
grooves

Hand switch with operating lever

to activate the switch by cassette
or forceps

Single units

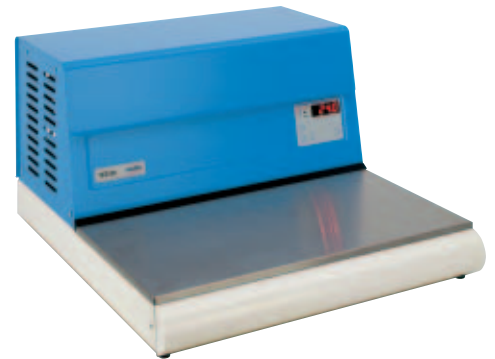
Cool unit

TES 99.410/99.510

The largest cold plate with a powerful aggregate easily reaches a temperature of -15°C in very short time. Its working surface has space for 110 blocks. The temperature is adjusted and regulated by an electronic control with digital display. Its features guarantee stability, comfort and efficiency.

Technical data:

Total dimensions (W/D/H):	500 x 570 x 300 mm
Dimensions cold plate (W/D):	500 x 260 mm
Temperature:	$+15^{\circ}\text{C}$ to -15°C
Weight:	25 kg
Power supply:	230V/50Hz/320VA and 115V/60Hz/320VA

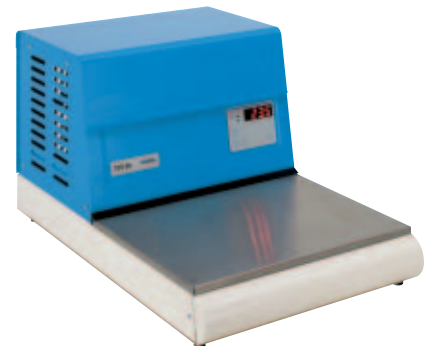


TES 99.420/99.520

The compact model with small foot print for laboratories with limited table space. This cool unit has a capacity of up to 80 blocks that can be chilled at a temperature adjustable down to -15°C . All other features are the same as described above.

Technical data:

Total dimensions (W/D/H):	360 x 570 x 300 mm
Dimensions cold plate (W/D):	360 x 260 mm
Temperature:	$+15^{\circ}\text{C}$ to -15°C
Weight:	20 kg
Power supply:	230V/50Hz/150 VA and 115V/60Hz/150 VA



TES 99.430/99.530

This cool unit differs from the other models as it has a 20 mm deep cooling tray instead of a cold plate. For better temperature stability it is equipped with a tightly closing stainless steel cover. Up to 50 blocks can be chilled at a temperature adjustable down to -15°C .

Technical data:

Total dimensions (W/D/H):	360 x 570 x 300 mm
Dimensions cooling tray (W/D):	210 x 260 mm
Temperature:	$+15^{\circ}\text{C}$ to -15°C
Weight:	20 kg
Power supply:	230V/50Hz/150 VA and 115V/60Hz/150 VA



Single units

Dispenser unit

TES 99.200/99.300

The dispenser unit with its large working area and the heat protective hand rest provides comfortable embedding with all kinds of systems and tissue specimens of any size. Its standard accessories like movable cold light lamp, foot and hand switch, the forceps wells on the left and right side of the nozzle, the adjustable paraffin flow and the draining grooves in combination with the collection drawer meet the requirements of busy histology laboratories preventing operator's fatigue. Using the timer for the programming of pre-set start up and end times for every weekday, separately for the paraffin tank and the working plate, an optimum energy saving and "just in time" readiness are achieved.

Technical data:

Total dimensions (W/D/H):	360 x 570 x 300 mm
Dimensions working plate (W/D):	360 x 245 mm
Temperature:	+30 °C to +70 °C
Capacity of paraffin tank:	3,5 litres
Cold spot:	-5 °C, 40 mm Ø
Heating for 6 forceps	
Weight:	22 kg
Power supply:	230V/50Hz/350 VA and 115V/60Hz/350 VA



Thermal unit

TES 99.600/99.700

The thermal unit serves for the warming up and storage of all kinds of embedding molds and cassettes. It is divided into two compartments: one for molds and one for liquid paraffin with removable stainless steel tray. The temperatures are adjusted separately by the 2-channel control with digital display.

Technical data:

Total dimensions (W/D/H):	360 x 570 x 300 mm
Dimensions warming chamber (W/D):	305 x 205 mm
Dimensions warming tray (W/D):	295 x 235 mm
Temperature:	
Warming chamber:	+30 °C to +70 °C
Warming tray:	+30 °C to +75 °C
Weight:	15 kg
Power supply:	230V/50Hz/750 VA and 115V/60Hz/750 VA



products made in germany

medite

Gesellschaft für Medizintechnik mbH

Wollenweberstraße 12
D - 31303 Burgdorf/Germany
Phone: + 49 (0) 51 36 / 88 84 - 0
Fax: + 49 (0) 51 36 / 88 84 - 55
E-Mail: sales@medite.de
Internet: www.medite.de

Distributor

More cool units from our product line

COP 30

Tissue cool plate

For the rapid cooling of paraffin blocks during tissue-processing or cutting.

The **COP 30** tissue cool plate enables the cooling of approx. 60 to 100 embedding molds or paraffin blocks simultaneously. The quiet and environment friendly cool unit performs a maximum cooling temperature of -20°C after a few minutes only. The temperature is adjustable and surveyable by digital control. The cold plate is made of stainless steel, polished, with heated brims to prevent condensation.



Technical data:

Dimensions (W/D/H):	440 x 600 x 235 mm
Temperature:	-20°C to $+15^{\circ}\text{C}$
Weight:	23 kg
Power supply:	230V/50Hz/300VA and 115V/60Hz/300VA

TKF 22

Quick cool unit

For the quick intense cooling of paraffin blocks during tissue-processing or cutting and embedding molds.

The solid-drawn cooling tray made of high-grade steel enables the cooling of 180 paraffin blocks simultaneously.

The high performing unit is cooling down to -35°C in a very short time. The electronic temperature control with a range from -35°C to $+15^{\circ}\text{C}$ is continuously adjustable. A powerful refrigerating set with the non flammable R 404 A is offering high thermal stability. R 404 A is chlorine free protecting the environment and ozone layer.



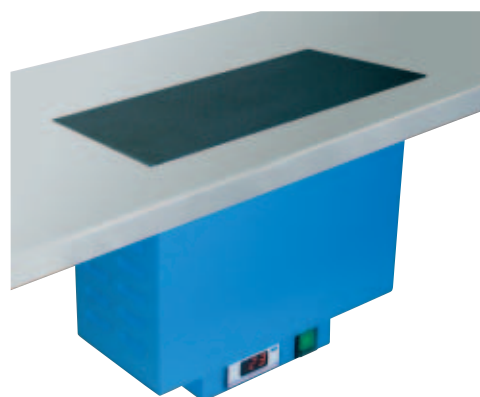
Technical data:

Dimensions (W/D/H):	400 x 645 x 250 mm
Temperature:	-35°C to $+15^{\circ}\text{C}$
Weight:	23,5 kg
Power supply:	230V/50Hz/450VA and 115V/60Hz/450VA

MKF 20

Table-fitted cool unit

CFC-free cool plate made of stainless steel to be installed in the work bench. Space saving model offering optimal conditions when cutting at the microtome. The electronic temperature control with digital display at the lower part of the unit can be turned 90° enabling the installation in longitudinal or lateral direction.



Technical data:

Dimensions (W/D):	350 x 230 mm
Installation dimensions:	
Cut:	330 x 210 mm
Depth:	320 mm
Temperature:	-15°C to $+15^{\circ}\text{C}$
Weight:	15 kg
Power supply:	230V/50Hz/125 VA and 115V/60Hz/125 VA